



**STEECKER ANIONDRY**

Mineral feed for dry cows

COMPOSITION: Magnesium sulphate anhydrous, sodium chloride, calcium chloride, calcium carbonate, monocalcium phosphate, magnesium oxide, flower of sulphur, *Andrographis paniculata*, *Helicterus isora*, *Achyranthes aspera*, *Tinospora cordifolia*, *Azadirachta indica*, *Piper longum*.

ADDITIVES (per kg):

**Vitamins, pro-vitamins and chemically well-defined substances having similar effect**

3a672a - Vitamin A	U.I.	420.000
3a671 - Vitamin D3	U.I.	210.000
3a700 - Vitamin E	mg	3.000
3a820 - Vitamin B1	mg	380
3a831 - Vitamin B6/pyridoxine hydrochloride	mg	150
Vitamin B12/Cyanocobalamin	mg	1,1

**Trace elements**

3b103 - Iron (Iron(II) sulphate monohydrate)	mg	2.215
3b405 - Copper (Copper(II) sulphate pentahydrate)	mg	250
3b605 - Zinc (Zinc sulphate monohydrate)	mg	5.397
3b503 - Manganese (Manganous sulphate monohydrate)	mg	5.500
3b202 - Iodine (Calcium iodate anhydrous)	mg	111
3b8.12 - Selenium (Selenomethionine produced by <i>Saccharomyces cerevisiae</i> CNCM I-3399)	mg	10

**Flavouring compound**

2b485 - Dry grape extract

**Anticaking agents**

1g568 - Clinoptilolite of sedimentary origin	mg	60
--	----	----

**USAGE**

accurately mix the product to the allowance for dry cows at the quantity of 200 g/head/day

**WARNING**

The level of copper in this feed may cause copper deficiencies in cattle grazing pastures with high contents of molybdenum or sulphur. Simultaneous use with vitamin D2 is not allowed.

The above specifications are for reference only, the text does not represent the official label on the packaging.

ANALYTICAL  
CONSTITUENTS

Calcium	12,70%
Phosphorous	2,50%
Sodium	7,20%
Magnesium	8,30%



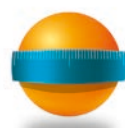
Better flowability and manageability



Less humidity absorption



Single specific gravity



Uniform granule size



Less skin contact



Less electrostatic charge



Lack of suspended powders

Mineral feed for dry cows



**-7.300**  
**DCAB [mEq]**

# highest availability of calcium obtained thanks to balanced cation/anion ratio

## ANION DRY

The Steecker technology confers an added value to granulates in comparison with the starting compositions. With the Steecker technology, premixtures in powder are given structural and morphological features which, together with chemical characteristics, allow to obtain products with higher quality standards.

Steecker AnionDry is a complementary anionic feed specific for the dry phase of dairy cows and the preparation for calving of heifers.

Steecker AnionDry contains anionic minerals, fat-soluble vitamins, vitamins of the B group and trace elements.

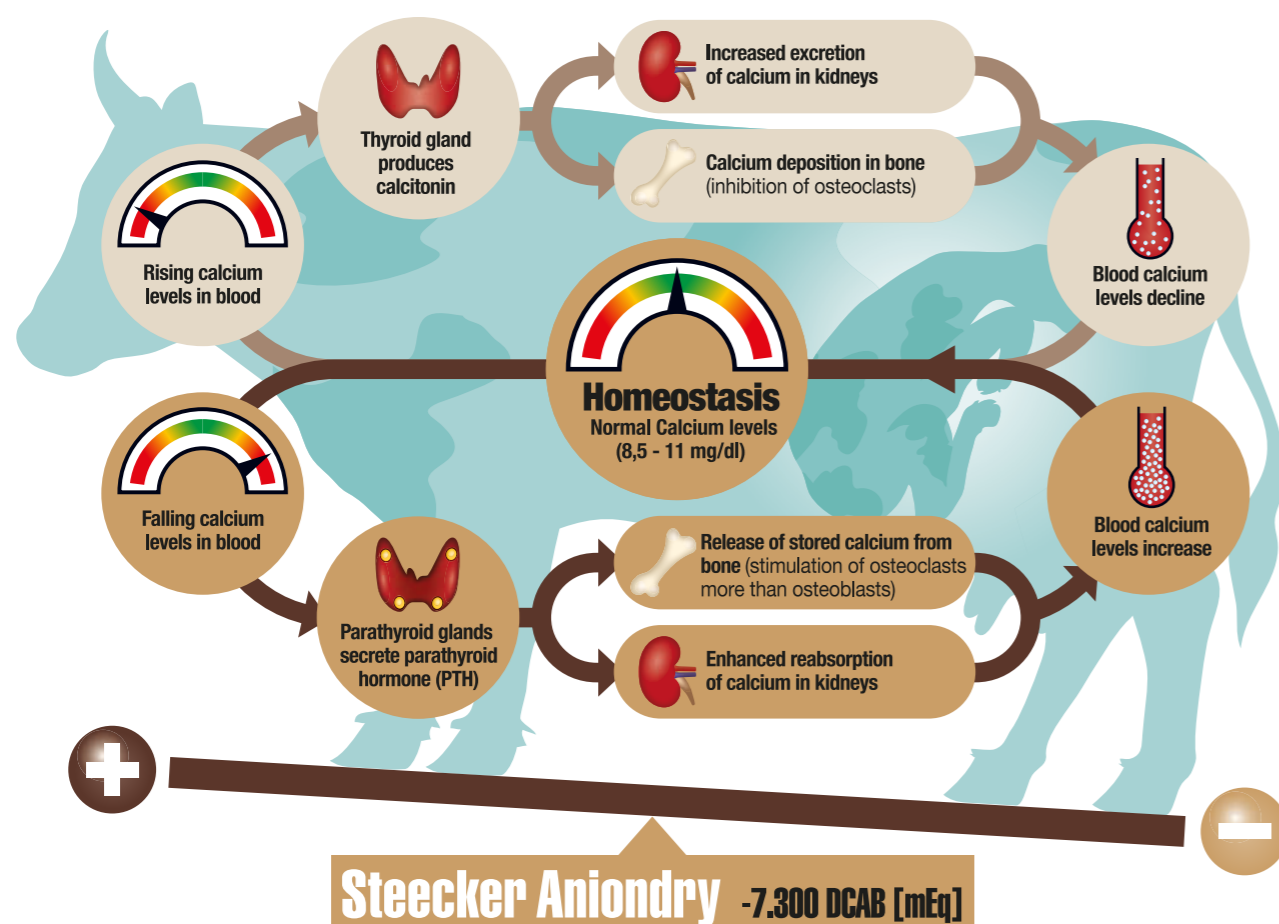
### Steecker AnionDry:

- For an effective feeding of cows during the dry phase
- To support the health of cows during a period of recovery from stress.
- For the formulation of a diet intending to meet the needs of pregnant cows in preparation for calving and in order to avoid the metabolic pathologies of the early periods after calving
- To maximise milk production at peak

Steecker AnionDry is to be used in the total mixer wagon (TMW) during all the dry phase and in preparation for calving of the heifers. Dosage varies according to the components of the allowance. Dosage becomes specific for the metabolic phases (phase 1 and phase 2) of the dry period.

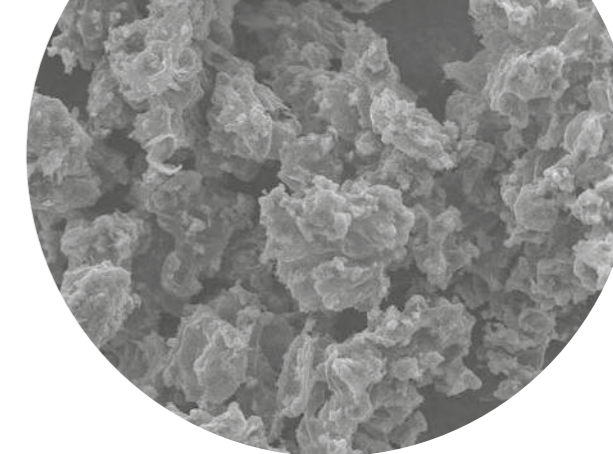
+  
-  
**-7.300**  
DCAB [mEq]

Steecker AnionDry is able to balance the cations/anions ratio in the allowance and to make an optimal DCAB value in the diet to reach the highest availability of calcium (Ca++) at calving.



### High palatability

Steecker Aniondry presents a porosity structure (picture) which allows the entrance of fluids inside the pores but the solubilisation of the content occurs in a slower way. This avoids the poor palatability problem of the products based on anionic salts because the immediate solubilisation in the mouth does not occur.



### Characterization parameters

**Dustiness:** measured with the Heubach method, it is the quantity of dust in grams produced by 50g of material exposed to an air flow of 20 litres in 5 minutes.

**Distribution by size:** it shows the minimum and maximum dimensions of particles. Products with too tiny particles can generate a lot of dust and absorb more humidity while products with too big particles are not very homogeneous.

**Density:** it indicates the weight of a specific volume of product; there are 2 kinds of densities: bulk density for the just poured product, tapped density for the compacted product.

**Carr Index and Hausner ratio:** they are two values obtained by the comparison of the bulk and tapped densities. If bulk and tapped values are similar it means that the product is not likely to cake.

**Angle of repose:** it represents the angle between the side of a heap of product and the surface on which it is poured: a low value of the angle of repose means high flowability.

STEECKER ANIONDRY PROPERTIES			
Characterisation	Measure Unit	Steecker® Aniondry	Controllo in powder
Dustiness	HU*	0,004	0,035
Bulk density	g/cm <sup>3</sup>	0,96	1,18
Tapped density	g/cm <sup>3</sup>	1,12	1,47
Carr Index	absolute value	12,4	19,7
Hausner ratio	absolute value	1,14	1,24
Angle of repose	degrees	31°	38,70°

STANDARD REFERENCE VALUES			
Hausner Ratio	Carr Index	Angle of repose	Evaluation
1,00 – 1,11	<10	25-30	Excellent
1,12 – 1,18	11-15	31-35	Good
1,19 – 1,25	16-20	36-40	Fair
1,26 – 1,34	21-25	41-45	Acceptable
1,35 – 1,45	26-31	46-55	Poor
1,46 – 1,59	32-37	56-65	Very Poor
>1,60	>38	>66	Very very poor

\*Heubach Unit, dust (g) generated by 50 g of material